

caſion before related; not to mention what it muſt have loſt by mere Wear in fourſcore Years.

We are told, that they have in the Hoſpitals of *Paris* human *Calculi* weighing 34 *Paris* Ounces: But this in *Trinity* Library, even at preſent, weighs 34 *Paris* Ounces all but 9 Grains; and muſt have weigh'd conſiderably more when it was whole. Yet theſe are perhaps the heavielt that are any-where recorded; except that very extraordinary one mention'd by Dr *Liſter*, in his *Journey to Paris*, p. 232; which he ſays was taken from a Monk *A. D.* 1690. and weighs 51 Ounces.

This Hiſtory may confirm to us the Uſefulneſs of endeavouring to relieve the Violence of Pain in this Diſtemper, by altering the Poſition of the Stone in the Bladder, either with the Help of the *Catheter*, or by ſome proper Alteration in the Poſture of the Patient; ſince, with reſpect to the Pain which it occasions, the Situation of the Stone appears to be of far greater Conſequence than its Size.

XIV. *A Letter from the Rev. Charles Lyttelton LL.D. and F. R. S. Dean of Exeter to the Prefident, concerning a non-deſcript petrified Inſect.*

Read Dec. 20, 1750. **T**HE curious Fossil I have now the Honour to exhibit to the *Society*, is as rare as its Figure is elegant; having been mention'd by none of our own Writers who treat on Fossils,

Fossils, and but very imperfectly describ'd by foreign Lithographists *.

I discover'd a single Specimen of it (*see* TAB. I. *Fig.* 3, 4, and 5.) last Year in the Limestone Pits at *Dudley* in *Worcestershire*; and very lately a large Mass of Limestone (*see* TAB. II.) full of them in the same Place; both which are now submitted to the Inspection of this Learned Body, who are best able to determine to what Class of the Animal Kingdom it properly belongs. I am, Sir, with great Regard,

Hill-street, Dec. 20.
1750.

Your most obedient Servant,

C. Lyttelton.

* I suppose the *Dean* means Dr. *Bruckmann*, and the late Mr. *Linck*, an eminent Apothecary at *Lipsick*: For Dr. *Bruckmann*, in his *Centuria Epist. Itinerar. Wolfenbuttl.* 1742. 4°, *Epist.* XXIII. has given several Figures of Petrefactions, very much resembling these *Dudley* Fossils; the first was found at *Steme*, a Village in the Neighbourhood of *Paderborn*, given him by Dr. *Kænig*, which he took for a sort of *Polypus marinus*; he says it is an Animal unknown to him, but he gives those Figures of it, in hopes that some curious Persons, who live near the Sea, may light upon some Animal resembling this. The Body of this Stone, he says, has, on each Side three striated Lobes, and three pointed *Appendices* beneath; its inner Substance is white, being *Selenites*, or white Spar; its Colour on the Outside is every-where brown. His Friend *Linck* had sent him Specimens of these Stones 6 Years before, some modell'd in Wax, others engraved upon Copper.

C. M.

ADDENDA

ADDENDA to the preceding Paper.

Extract of a Letter from the Rev. Dr. Lyttelton to C. Mortimer, Secret. R. S.

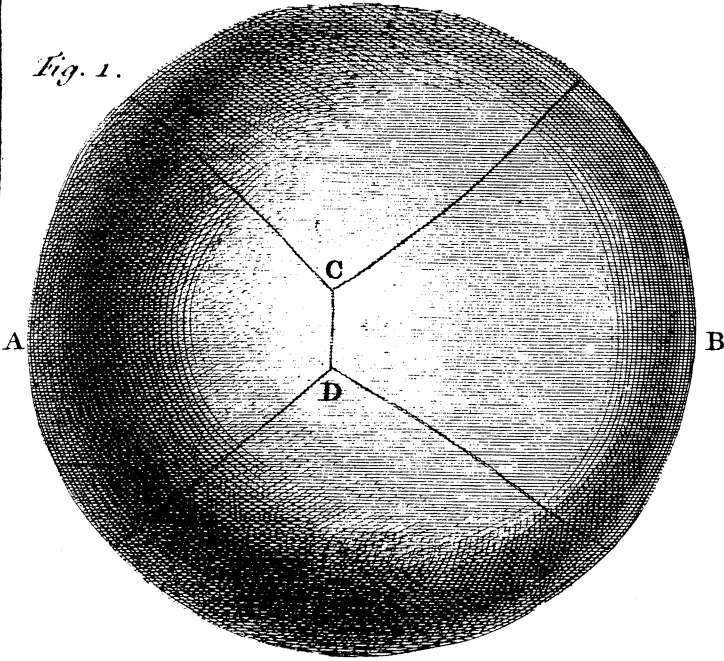
THE Rev. Dr. *Shaw*, of *Oxford*, has procured a Specimen of the extended *Eruca*. As the Fossilists differ'd in their Opinion of this *Dudley Fossil*, some pronouncing it an *Eruca*, others a *Bivalve*, I thought it best to leave the Reader to judge for himself from the Engravings; but, as we are now able to add a Specimen of this Fossil in an extended Posture, there is a better Pretence to call it an *Eruca*. See TAB. I. *Fig. 6. 7. and 8.*

XV. *Some further Account of the before-mention'd Dudley Fossil, by the Editor of these Transactions.*

THE Rev. Dr. *Pocock*, F. R. S. was so obliging as to send several Specimens of this Fossil to the *President*; who put them into my Hands, and desired me to draw up an Account of them to be annexed to the preceding Paper.

The first Specimen is a Mass of Stone containing the Face and Eyes, with some Rudiments of Legs on the Sides; but the Back is intirely broken away. Another Specimen contains the Head only: A third, the Head, and Part of the Back, but greatly distorted. But the most beautiful and complete are the two
which

Fig. 1.



p. 535.

Fig. 2.

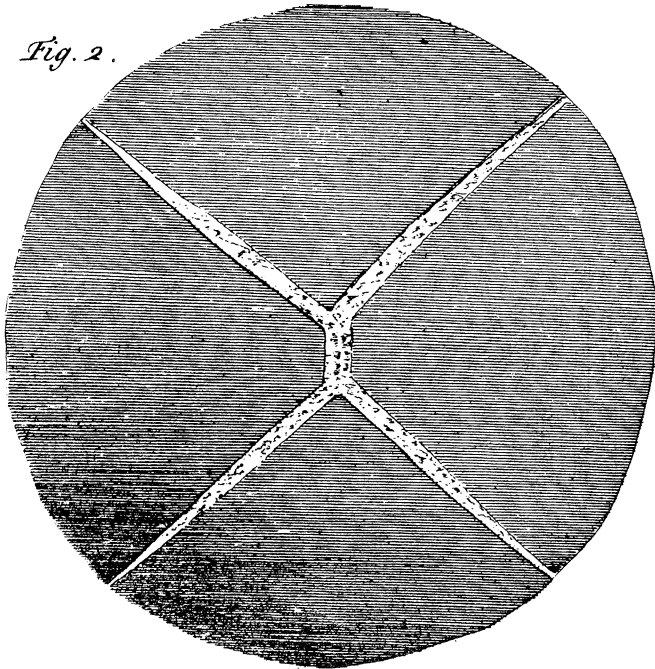
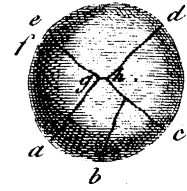


Fig. 13.



p. 603.

Fig. 14.

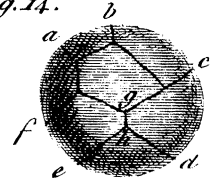


Fig. 3.

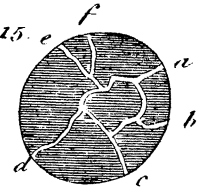


p. 5.

Fig.



Fig. 15.



p. 604.

Fig. 16.

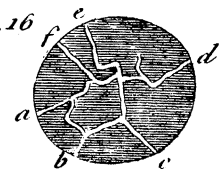


Fig.



p. 59

Fig. c





p. 599.

Fig. 4.

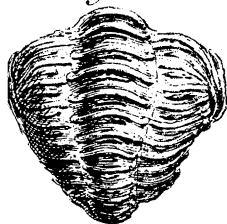
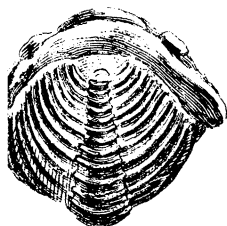


Fig. 5.



p. 599.

Fig. 6.

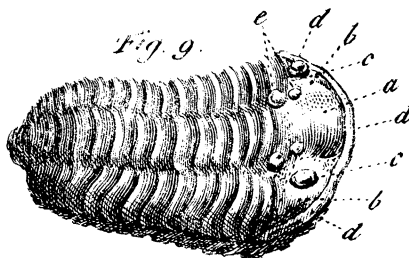
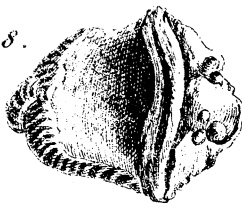


Fig. 7.



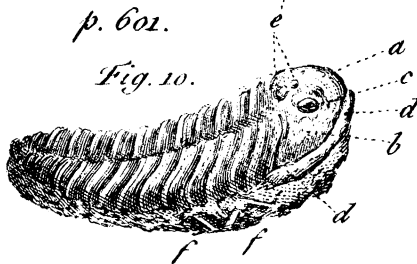
p. 599.

Fig. 8.



p. 601.

Fig. 10.



p. 601.

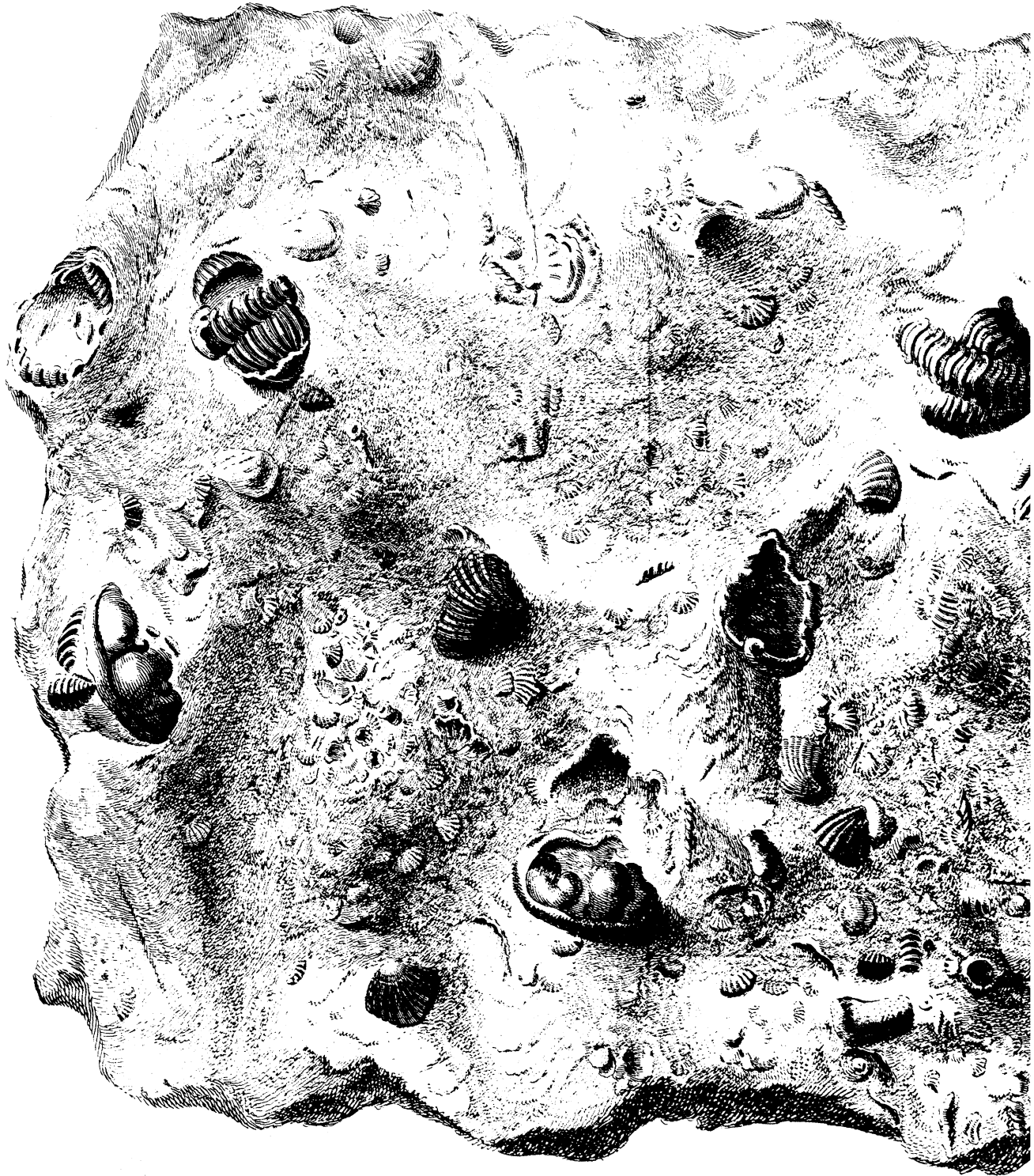
Fig. 11.



Fig. 12.



J. Mynde sc.



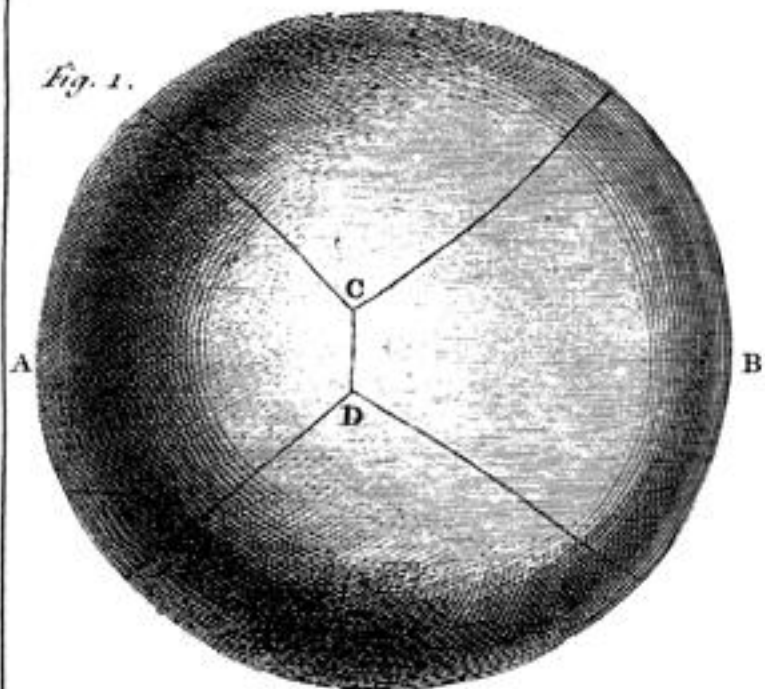


3. II 7. 590.



Culpa. Occu

Fig. 1.



p. 535.

Fig. 2.

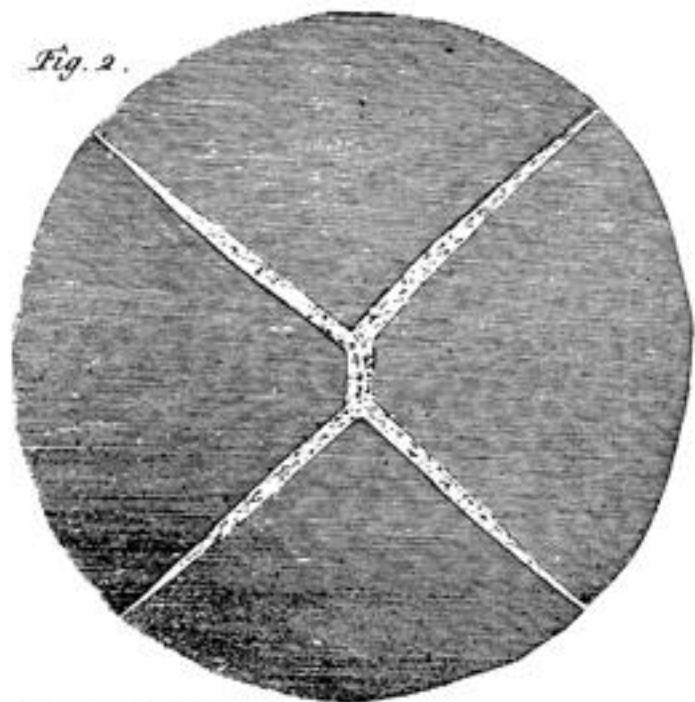


Fig. 13.



p. 603.

Fig. 14.

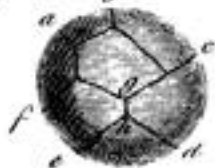
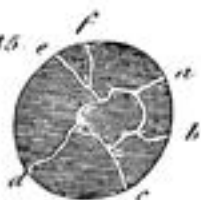


Fig. 15.



p. 604.

Fig. 16.

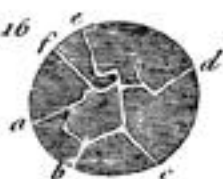


Fig. 3.



p. 599.

Fig. 4.



Fig. 5.



p. 599.

Fig. 6.



Fig. 7.



p. 599.

Fig. 8.



Fig. 9.



p. 601.

Fig. 10.



p. 601.

Fig. 11.



Fig. 12.



J. Myale sc.

